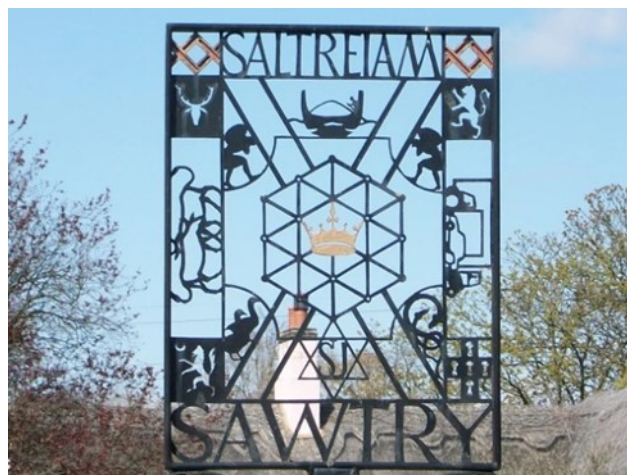


Sawtry Village Neighbourhood Plan 2022 to 2036



Designated Area Plan

September 2022



Sawtry Village Neighbourhood Plan 2022 to 2036

Designated Area Plan September 2022

Pre-submission Draft of the Neighbourhood Plan in accordance with
Regulation 14 of Neighbourhood Planning Regulations 2012



The Parish Council received professional planning support from NEIGHBOURHOOD-PLAN.CO.UK during the production of this Neighbourhood Plan.



NEIGHBOURHOOD-PLAN.CO.UK

For any query relating to the Neighbourhood Plan contact:

Clerk to Sawtry Parish Council

The Old School House

37 Green End Road

Sawtry

Huntingdon

PE28 5UY

Tel: 01487 831771

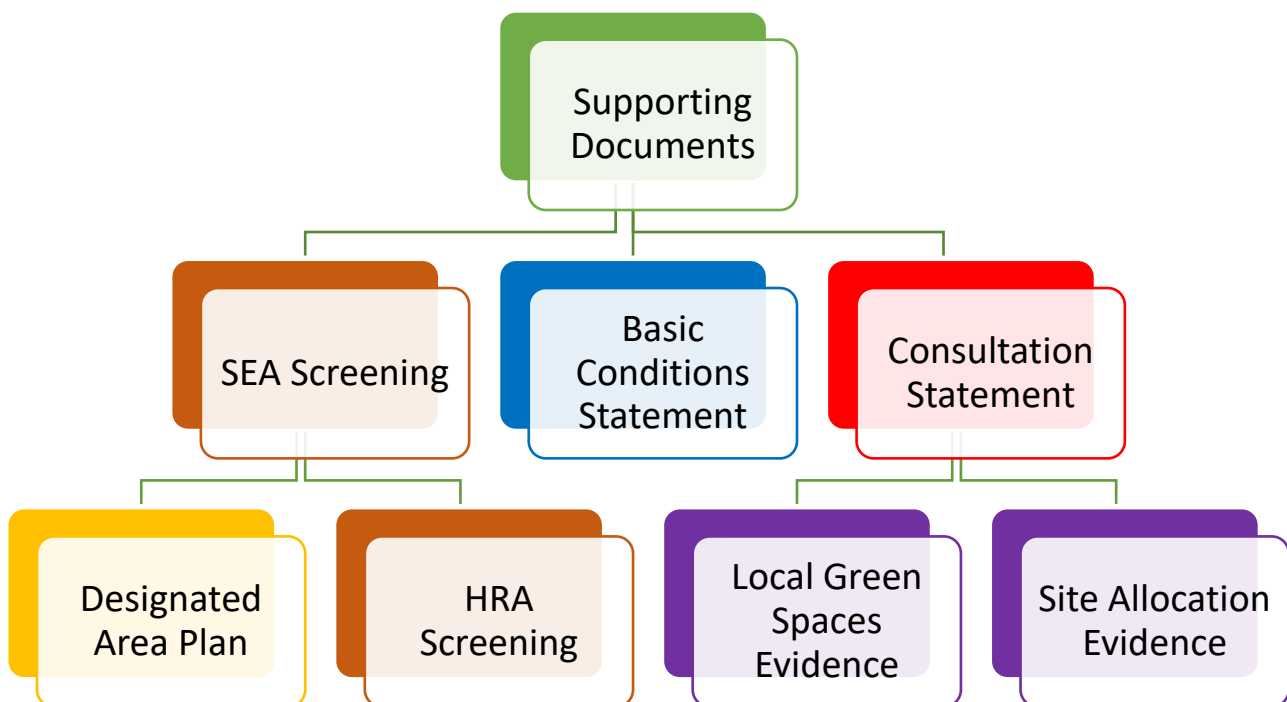
Office Open 09.30 – 13.00 (Monday – Friday)

E mail: clerk@sawtry-pc.gov.uk

www.sawtry-pc.gov.uk

Sawtry Village Neighbourhood Plan 2022 to 2036

The Neighbourhood Plan



Copyright Acknowledgements

Mapping

Contains OS data © Crown copyright 2022

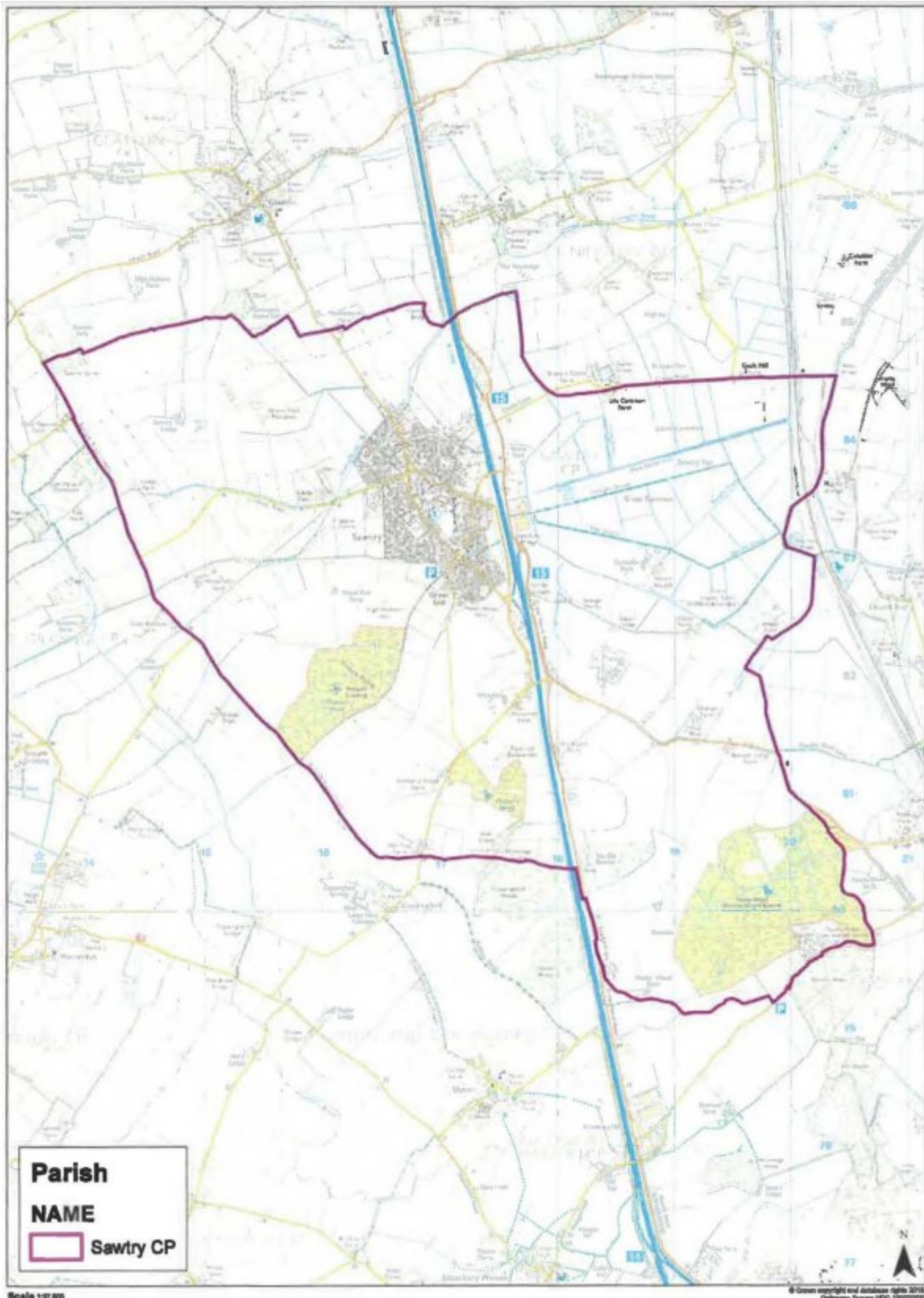
© Crown copyright and database rights 2022, OS licence number 100062422

Mapping used in this document is either OS Open Data used under the Open Government Licence or is OS Licensed Data reproduced in accordance with the Parish Council's Public Sector Geospatial Agreement licence number 100062422 issued by Ordnance Survey.

Sawtry Village Neighbourhood Plan 2022 to 2036



Designated Area



Sawtry Designated Neighbourhood Plan Area

Produced by Huntingdonshire District Council © Ordnance Survey – OS Licence 100022322